

Daily Weather Update

Coastal Area Around The Sri Lanka

Information Fusion Center-Colombo

Amperice

130j-2019

100

200

300

400

500

600

700

800

900

1000

1100

1200

1300

1400

1500

1600

1700

1800

1900

2000

2100

2200

2300

2400

2500

2600

2700

2800

2900

3000

3100

3200

3300

3400

3500

08-16

APRIL

100

200

300

400

500

600

700

800

900

1000

1100

1200

1300

1400

1500

1600

1700

1800

1900

2000

2100

2200

2300

2400

2500

2600

2700

2800

2900

3000

3100

3200

3300

3400

3500

3600

3700

3800

3900

4000

4100

4200

4300

4400

4500

4600

4700

4800

4900

5000

5100

5200

5300

5400

5500

5600

5700

5800

5900

6000

6100

6200

6300

6400

6500

6600

6700

6800

6900

7000

7100

7200

7300

7400

7500

7600

7700

7800

7900

8000

8100

8200

8300

8400

8500

8600

8700

8800

8900

9000

9100

9200

9300

9400

9500

9600

9700

9800

9900

10000

10100

10200

10300

10400

10500

10600

10700

10800

10900

11000

11100

11200

11300

11400

11500

11600

11700

11800

11900

12000

12100

12200

12300

12400

12500

12600

12700

12800

12900

13000

13100

13200

13300

13400

13500

13600

13700

13800

13900

14000

14100

14200

14300

14400

14500

14600

14700

14800

14900

15000

15100

15200

15300

15400

15500

15600

15700

15800

15900

16000

16100

16200

16300

16400

16500

16600

16700

16800

16900

17000

17100

17200

17300

17400

17500

17600

17700

17800

17900

18000

18100

18200

18300

18400

18500

18600

18700

18800

18900

19000

19100

19200

19300

19400

19500

19600

19700

19800

19900

20000

20100

20200

20300

20400

20500

20600

20700

20800

20900

21000

21100

21200

21300

21400

21500

21600

21700

21800

21900

22000

22100

22200

22300

22400

22500

22600

22700

22800

22900

23000

23100

23200

23300

23400

23500

23600

23700

23800

23900

24000

24100

24200

24300

24400

24500

24600

24700

24800

24900

25000

25100

25200

25300

25400

25500

25600

25700

25800

25900

26000

26100

26200

26300

26400

26500

26600

26700

26800

26900

27000

27100

27200

27300

27400

27500

FORMATION FUSION CENTER

WEATHER FORECAST FOR SEA AREAS AROUND THE ISLAND DURING NEXT 24 HOURS

Issued at 05.30 a.m. on 15 May 2026



**DEPARTMENT OF METEOROLOGY
SRI LANKA**

COLOMBO - SRI LANKA

CONDITION OF THE RAIN

Showers or thundershowers will occur at times in the sea areas around the island.

WINDS

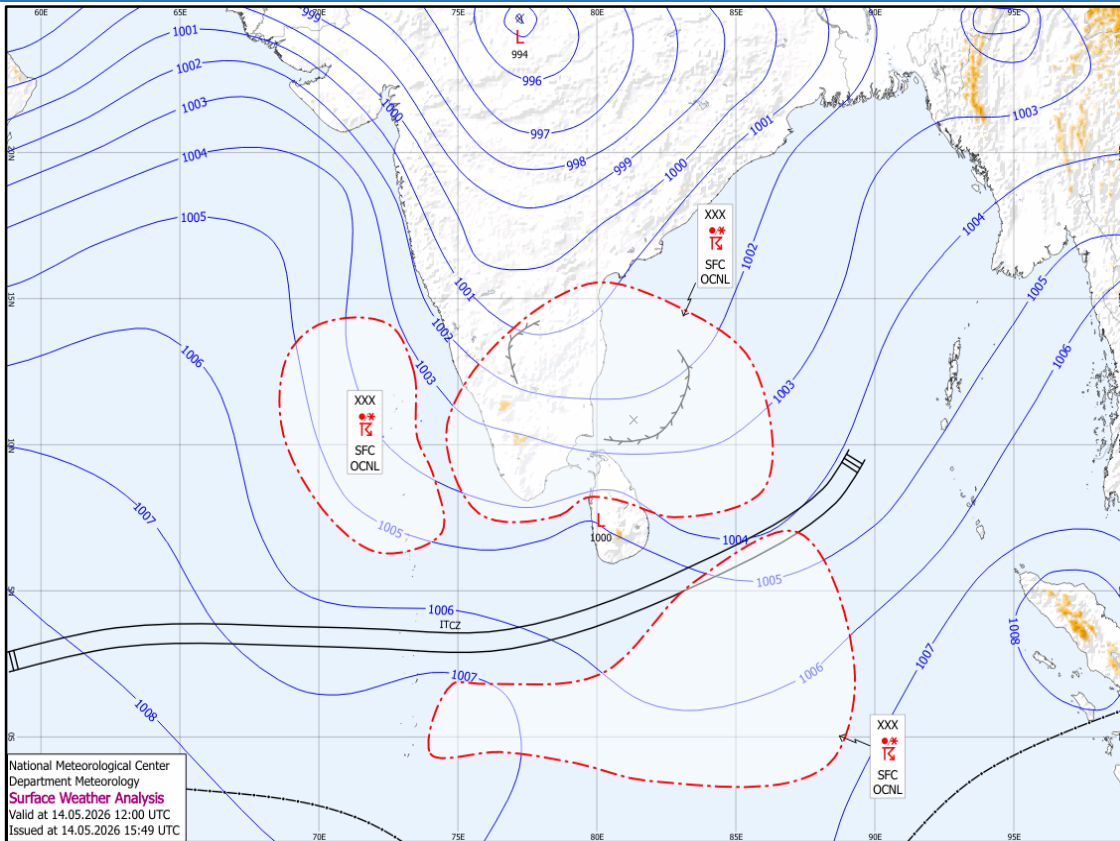
Winds will be South-westerly. Wind speed will be (25-35) kmph. Wind speed can increase up to (50-60) kmph at times in the sea areas off the coast extending from Trincomalee to Pottuvil via Kankasanthurai, Puttalam, Colombo, Galle and Hambantota.

STATE OF SEA

The sea areas off the coasts extending from Trincomalee to Pottuvil via Kankasanthurai, Puttalam, Colombo, Galle and Hambantota will be rough at times. The other sea areas around the island can be moderate.

The swell waves (about 2.0 – 2.5 m) height (this is not for land area) may increase in the sea areas off the coast extending from Puttalam to Pottuvil via Colombo, Galle and Hambantota. Temporarily strong gusty winds and very rough seas can be expected during thundershowers.

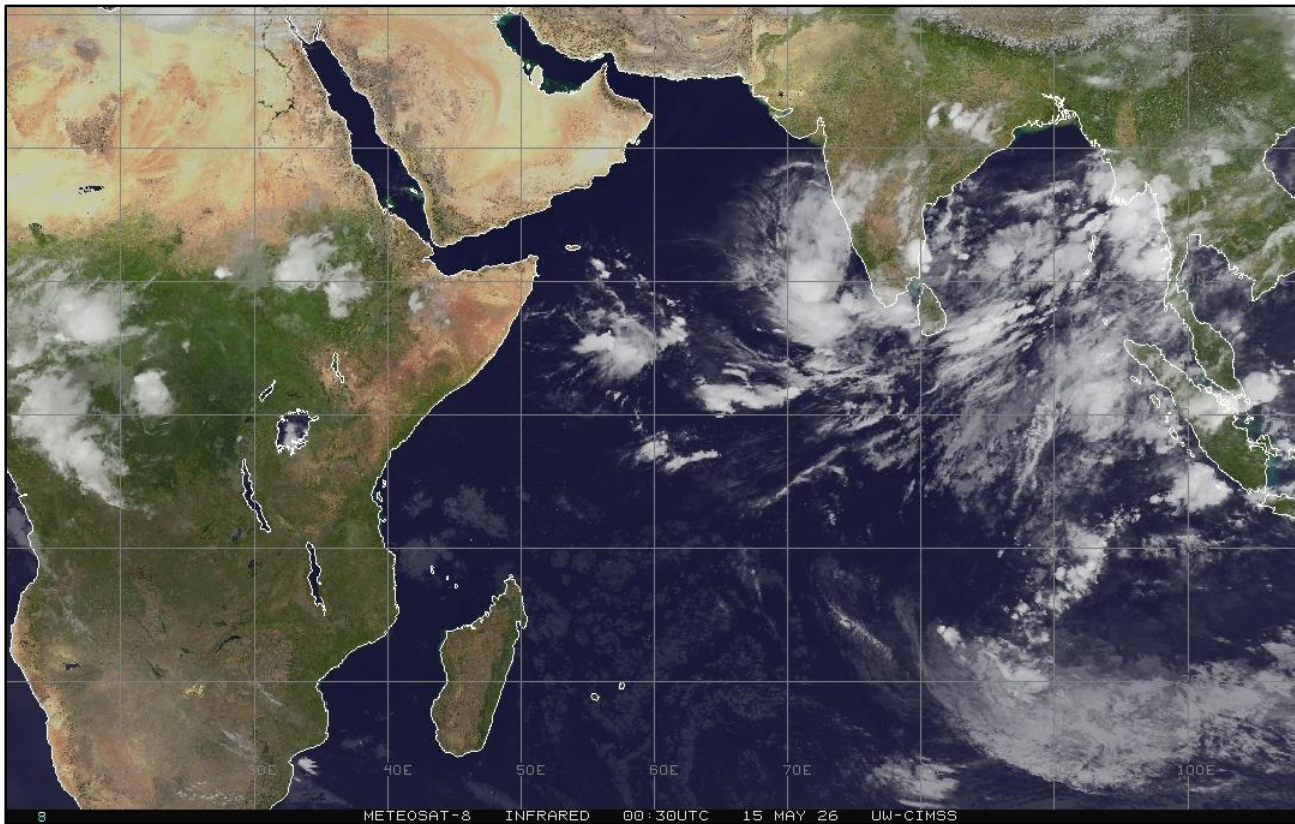
SURFACE ANALYSIS CHART



This analysis charts show the surface pressure pattern over Sri Lanka and the surrounding area. They display isobars (lines of equal pressure) and indicate areas of high (H) and low pressure (L) along with their central pressure value. Isobars are represented by solid blue lines, spaced every 1 hPa. High pressure is usually associated with mainly dry, settled weather with light winds, while low pressure is normally associated with unsettled weather, which is often wet and windy. The lower the pressure, generally the stronger the winds and the heavier the rain.

The map shows Coordinated Universal Time (UTC) and the local time is UTC+5.30.

SATELLITE IMAGE



5/15/2026

IFC -Colombo



**Information Fusion Center
Colombo
Sri Lanka**

THANK YOU

The Officer Incharge
Information Fusion Centre - Colombo
Naval Headquarters, Colombo, Sri Lanka
+94 11 719 480 6
+94 74 120 4829
ifc@navy.lk
ifc.cbo@gmail.com